

# DELIVERING THE SOLUTIONS OF TOMORROW TODAY



**HAVENBEHEER**  
**SURINAME**  
*Port Management Company*



**PORT OF**  
**NICKERIE**

# CONTENT

■ <b>Suriname Port Management Company</b>	
<i>Delivering the solutions of tomorrow today</i> .....	4
■ <b>Port of Nickerie</b>	
<i>Green ports of the future</i> .....	10
■ <b>Masterplan Port of Nickerie</b> .....	12
■ <b>Port of Rotterdam</b>	
<i>Technical advisor Port of Nickerie</i> .....	14
■ <b>MAD Energy</b>	
<i>Clean energy projects</i> .....	16
■ <b>EAME</b>	
<i>Working with the environment</i> .....	18
■ <b>Firebird LNG</b>	
<i>Gas solutions for the basin</i> .....	20
■ <b>Van Aalst Group and Safeway</b>	
<i>Sustainable logistic Solutions</i> .....	22
■ <b>Building &amp; Working with Nature</b>	
<i>Green shorebases of the future</i> .....	24
■ <b>Combi Lift and Harren Group</b>	
<i>Sustainable integrated project logistic Solutions</i> .....	26



THE **NEW FUTURE** STARTS HERE.



**HAVENBEHEER  
SURINAME**  
Port Management Company



**PORT OF  
NICKERIE**



**Port of  
Rotterdam**  
Technical Advisor



**MAD ENERGY**  
MAKE A DIFFERENCE



**FIREBIRD LNG**



**VAN AALST  
GROUP B.V.**



**SAFEWAY**  
MOTION COMPENSATED GANGWAYS



**EuroParcs**



**Van Oord**  
Marine ingenuity



**CombiLift**  
Integrated Project Logistics



**EAME**  
Earth & Marine Environmental Consultants

# DELIVERING THE SOLUTIONS OF TOMORROW TODAY

It is my pleasure to welcome you to the future world of our upcoming port, the Port of Nickerie. This ambitious project will connect us all, strengthen our economy, and create new opportunities in the region and beyond. As the CEO of the Suriname Port Management Company, in partnership with Phoenix Development Company, it is an honor to take you on this journey of vision and progress.

At the moment, the Suriname Port Management Company has the main Port of Paramaribo, the Dr. Jules Sedney Port of Paramaribo, under her management. A port that has been accommodating the country for more than 50 years.

Our plans for the new port and Special Economic Zone in Nickerie are based on collaboration with experts, and a deep understanding of today's world, which is increasingly concerned about the environment.

This port will be more than just a place for shipping and trade. Our vision focuses on preserving nature and building with sustainable concepts to address the

needs of the future. By using advanced technologies and sustainable practices, we want to set an example for other ports worldwide. The port will offer a gas solution for the Suriname-Guyana basin and become an energy-exporting port to Europe. It will also serve as a strategic hub for international trade and encourage innovation.

We strongly believe in collaboration and partnerships. We aim to create an ecosystem where businesses, suppliers, and partners can work together, support each other, and develop innovative solutions. We are seeking partnerships with companies that share our vision and want to contribute. We invite everyone to be part of this promising network.

This brochure provides a preview of the many benefits and opportunities we offer with our partners. From sustainable gas solutions to green shorebase housing and sustainable logistic solutions, we want to ensure that your company can thrive in the port and make Nickerie the best place to live, work, and visit.

But this project is not just ours; it belongs to all of us. We invite you to join this

exciting journey. Whether you are an entrepreneur seeking new trade opportunities, a supplier wanting to support our infrastructure, or someone interested in boosting the economic growth of our region, your involvement and support are crucial to our success.

Together, we will push boundaries, discover new opportunities, and create a lasting legacy for future generations.

Thank you for your interest and trust. Let's work together towards a better future in the Port of Nickerie.

The new future starts here.

**Andreas Talea**  
CEO

Suriname Port Management Company/  
N.V. Havenbeheer Suriname



## The Suriname Port Management Company

**We are the national port of Suriname. For over 50 years the Mandate entrusted to us by the Government of Suriname, is to advance the safe, efficient and effective functioning of the National Port and Transport System of Suriname.**

The Suriname Port Management Company has 2 ports currently under her management: Dr. Jules Sedney Port of Paramaribo and Port of Nieuw Nickerie. We are proud to mention that the Dr. Jules Sedney Port in Paramaribo has received the following awards:

- 2x awarded by the Caribbean Shipping Association for the **Ludlow Steward best Multipurpose Terminal in 2010 and 2011**
- 1x awarded by the Caribbean Shipping Association for **excellence in Port efficiency in 2012**
- 1x awarded by the Caribbean Shipping Association for the **Ludlow Steward container Port of the year 2021.**

We are ISO 9001, ISO 14001, ISO 45001 and ISPS certified.



HAVENBEHEER  
SURINAME  
Port Management Company

Your partner for Suriname

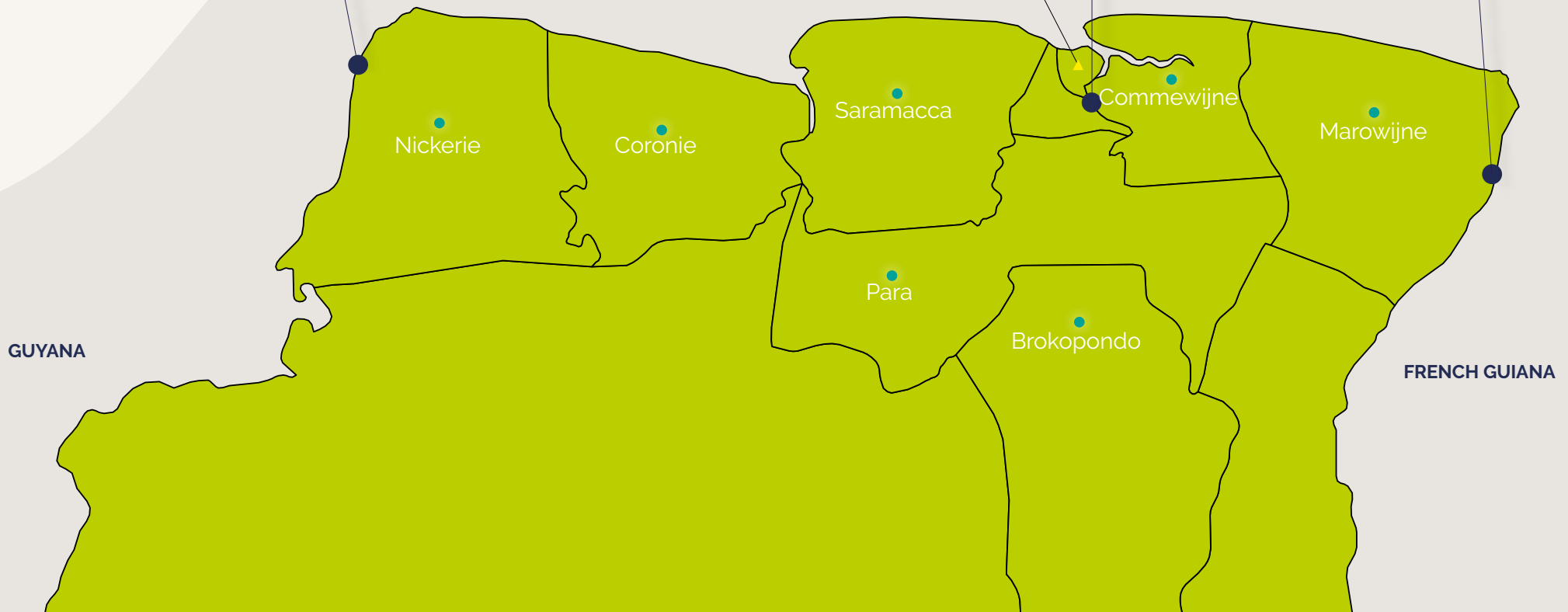


# SURINAME

Port of Nw. Nickerie

Dr. Jules Sedney  
Port of Paramaribo

Albina  
Jetty



# SURINAME PORT MANAGEMENT COMPANY

## Dr. Jules Sedney Terminal

This Terminal is located on the left bank of the Suriname River, 21 nautical miles (39 km) from the light buoy. It covers about 18 ha in surface area and there is construction of an additional 2 ha in progress.

The terminal has 600 m of river-facing common users quay and extension with 60 m in progress enabling approximately four vessels to berth simultaneously. The draft is 7 m at Low Water Spring. The terminal handles about 50 percent of Suriname's seaborne trade by volume. The terminal is served by some 19 international carriers and offers direct connections to different parts of the world through main liner services and indirect connections by feeder services. The terminal handled 101.192 TEU in 2021 and 103.874 TEU in 2022. In addition, the port handled some 297.659 T of breakbulk cargo in 2021 and 219.048 T in 2022.

## Reeferstation

The Reeferstation, at the Southwestern part of the terminal, has a surface area of approximately 14.000 m<sup>2</sup>. The station can connect import, export and transit reefer containers and offers Pre-Trip and Inspection services. The Reeferstation has a capacity of 119 reefer plugs and is equipped with back-up generators to ensure power supply.

## Oil Jetty

The Oil Jetty is the dedicated terminal where bulk ships carrying diesel and unleaded gasoline are accommodated. The jetty allows vessels with a Length Overall of up to 140 m to berth. This terminal handled about 164.665 MT of liquid bulk in 2021 and 113.363 MT in 2022.

## Port of Nieuw Nickerie

The Port of Nieuw Nickerie, 146 miles (235 km) West of Paramaribo is situated 11.8 km from the estuary, and has been under the management of NV Havenbeheer Suriname since 1995. The total port area covers 15 ha. The port has a quay of 250 m and a draft of 4.5 m at Low Water Spring. The port facilities will be upgraded in the near future based on the newest quality standards.



**HAVENBEHEER  
SURINAME**  
Port Management Company





DR. JULES SEDNEY  
PORT OF PARAMARIBO

**1. Worldwide connection**

Through + 19 mayor shipping lines and feeder services

**2. Strategic location.**

Shortest distance to the offshore exploration locations where Oil & Gas discoveries were made by APA, Petronas and Total Energy. 39 km away from the mouth of the Suriname river.

**3. Lower cost of connectivity** to fore and hinterland.

Connected to major industrial areas. Direct connectivity to industrial and commercial hubs.

**4. One stop logistics platform**

The most ideal onshore location for offshore operations, shorebase adjacent to existing port.

**5. Port optimization and expansion**

Complete upgrade and expansion of port facilities and operations, customs inspections, roadways, bridges, secondary roads, and modernization of traffic management systems for efficient traffic flow.

**6. Dedicated partners**

Customized to your needs, consistent and reliable.

**7. Central hub in road infrastructure network**

Close to international and national airports.

**8. Green energy**

Our port uses hydropowered elecricity

# DR. JULES SEDNEY PORT OF PARAMARIBO OFFSHORE SUPPORT



- 1 Shorebase Area\*  
0.8 ha

---

- 2 Shorebase Area\*  
1 ha

---

- 3 Shorebase potential\*  
+37.5 ha

---

- 4 Oil Jetty  
Berth: 140 m

- 5 Support Facility/ Shorebase Area\*  
0.8 ha  
Berth: 115 m, quay 97.5, draft 6.05 m LWS

- 6 Shorebase Area\*  
6.6 ha

- 7 Shorebase Area\*  
4 ha

- 10 Shorebase Area\*  
Berth 100 m

**i Wharf**

- Length: 115 m berth length, 22.5 m width
- Draft: 6.05 m at low water spring
- Allowable tension on mooring: 300 tons
- Allowable load middle section: 10 ton/m<sup>2</sup>
- Allowable load on edge sections: 5 ton/m<sup>2</sup>
- Length of access platform: 80 m
- Width of access platform: 16 m

**i Operational Area**

- Surface area Open Storage (paved): 0.8 ha
- Allowable load 10 t/m<sup>2</sup>
- Adjacent Available land (unpaved): +9.5 ha
- Connecting road to the Shore Base area and General Port sections: 5 ton/m<sup>2</sup>
- Width of access platform: 16 m

- 8 Shorebase Area\*  
2.3 ha

- 9 Logistics Center  
6.6 ha

**i Capacity:**  
60 trucks with trailers

**Operational:**  
1<sup>st</sup> half of 2024

- 11 Dr. Jules Sedney Terminal  
18 ha  
Quay 600 m  
Draft 7 m LWS

**i Reefer station**  
119 Reefer plugs

**Mobile Harbor cranes:**  
3 Gottwald & 2 Liebherr



## \* OFFSHORE SUPPORT SERVICES

- Multiple dedicated/ priority berths
- Guaranteed draft 7 m at LWS
- Allowable load: 10 t /m<sup>2</sup> (max.)
- Dedicated road from berth to yard
- Connection roads e.g. under the bridge and to the Support Facility
- Sufficient area adjacent to the commercial Port
- Offices, car park and changing rooms
- Logistics area with warehousing
- Dangerous goods storage

## EQUIPMENT

- Harbour cranes: 2 Liebherr MHC (84 T and 124 T) and 3 Gottwald MHC (100 T)
- 3 Rubber tyred gantry cranes (45 T)
- 7 Reach stackers
- 5 Empty handler
- 21 Terminal trailers
- 20 Forklifts

## SERVICES

### Integrated Logistics

- Base operations/ management
- Warehouse management
- Storage
- Customs brokerage Agency
- Freight forwarding
- Offshore Support

### Supply services

- Water provision
- Catering
- Fuel bunkering
- Power supply
- Tailored ship supplying


### Waste management services

- Domestic
- Industrial
- Vessel tank cleaning


### Logistics & HSE services

- Priority/dedicated jetty services
- Lodging
- Security management
- Fire fighting
- Rescue and Medevac
- Office space
- Crew changes

### 12 North facility

 +2 ha  
Quay 60 m

### 13 Nw. Nickerie (not on map)

 Specifications  
Length: 250 m berth length,  
23.8 m width  
Draft: 4.5 m at LWS  
Allowable load: 5 ton/m<sup>2</sup>

**Operational Area**  
Surface area Open Storage  
(unpaved): 0.8 ha

Connecting roads



# PORT OF NICKERIE

## *Green ports of the future*

Just off the coast of Nickerie, the westernmost city in Suriname, significant reserves of oil and gas have been discovered. This discovery brings new prospects for both the country's economy and its people.

Situated in the heart of the Suriname-Guyana Basin, our strategic location positions us ideally to cater to the needs of the Atlantic Markets, making us a prime choice for businesses seeking to deliver their goods and services both locally and internationally.

With an initial allocation of 1500 hectares (3707 acres) and capitalizing on the opportunities presented by the new world economies, we aim to proactively elevate Suriname's position to new heights. We are committed to developing top-notch infrastructure and resources to drive progress across various industries, including trade, agriculture, manufacturing, tourism, and the burgeoning energy sector.

The special economic zone within the port area will serve as a catalyst for economic growth, attracting businesses and investments. We will create an environment that fosters innovation, entrepreneurship, and job creation. By providing infrastructure, resources, and support to businesses, we aim to stimulate economic development and enhance the prosperity of the region.

In our national vision for this port, nature plays a central role. The integration of green spaces into the master design of the port complex is a fundamental requirement, known as "green-gray infrastructure." The port and nature are intrinsically interconnected, with a shared and integrated purpose.

To help us in this endeavor, we have engaged the technical expertise of the Port of Rotterdam to develop the masterplan. The initial phases of the masterplan are now complete, outlining a direction for the Port of Nickerie and the opportunities for Suriname.

The development of a port is an ongoing and evolving process, both short-term and long-term. It takes into account a multitude of key factors, including environmental and social considerations, economic opportunities and drivers, and the potential of future expansion. This requires careful planning and collaboration between various stakeholders including government, private sector and community. For Suriname to stay competitive in an ever-changing world, the Port of Nickerie is being developed as a versatile infrastructure for the industries of the future.

We envision a modern port that integrates sustainable practices and utilizes advanced technologies. This will enable us to minimize our environmental impact, reduce carbon emissions, and take part in the energy transition as the world shifts to renewable energy sources.

We are dedicated to developing a port and special economic zone that not only meet the needs of today but also contribute to a better future for our children and their future generations.



We are developing port facilities to drive progress across various industries, including trade, agriculture, manufacturing, tourism, and the burgeoning on- and offshore energy sector.





An offshore development is underway to convert flared or untapped natural gas into liquefied natural gas (LNG) for export, creating a positive environmental, economic, and societal impact.

We are allocating a buffer zone which will serve as an ideal destination for living, working, and vacationing, catering to the needs of both local residents and expats.






A designated special economic zone offers space to foster economic growth through the attraction of businesses and investments.

Together with our partners, we have initiated a mangrove coastal restoration program which will serve as a carbon sink and a natural barrier to protect the coastline.

# MASTERPLAN PORT OF NICKERIE

SHORE BASE | GREEN ENERGY | INDUSTRIAL HUB | MINERAL

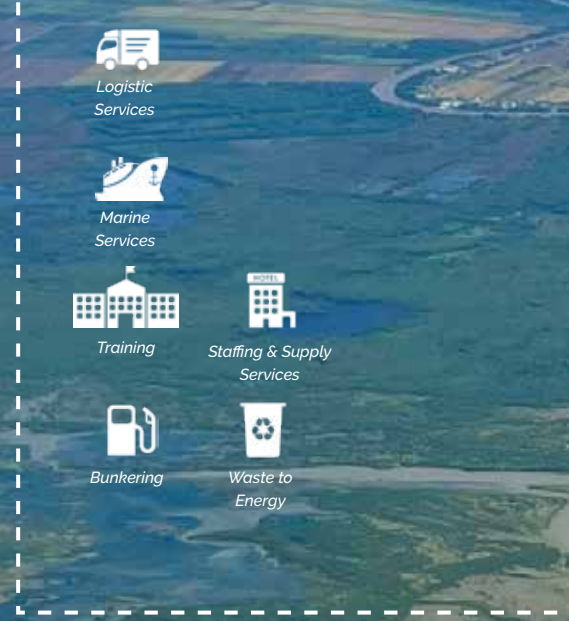
## PORT DRIVERS

-  Offshore activities
-  Energy transition
-  Strategic minerals
-  Food security
-  Value added activities

## RESOURCES



## SUPPORTIVE SERVICES PORT AREA



Technical advisor:



# TRANSFORMATION | GATEWAY FOR AGRI-BULK

## SPECIAL ECONOMIC ZONE

## BUFFERZONE

## PORT OF NICKERIE

WAREHOUSING & HANDLING | PRODUCTION & TRANSFORMATION



Offshore LNG platform



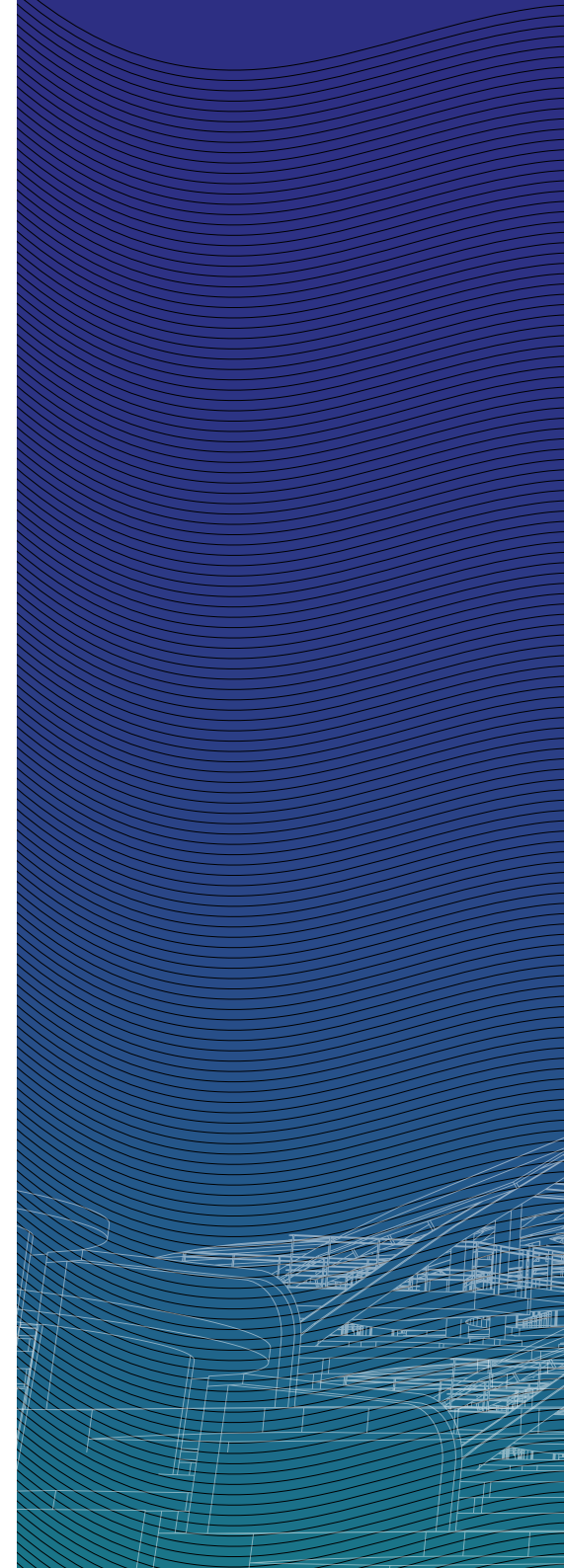
# PORT OF ROTTERDAM

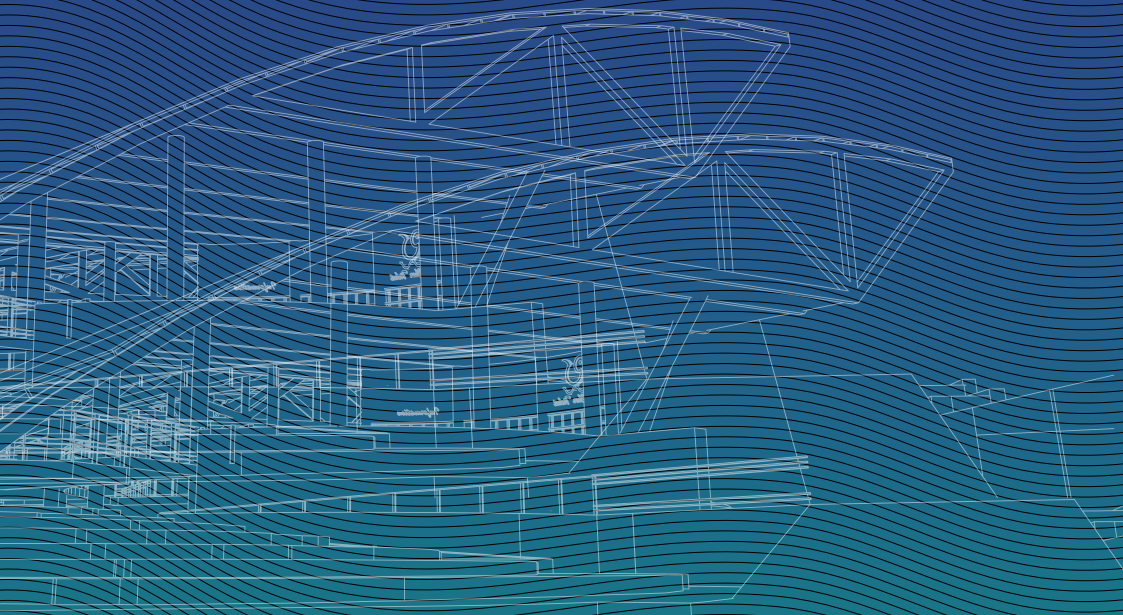
## *Technical advisor Port of Nickerie*

Port of Rotterdam, on request, provides port advisory services to governments and public/private port companies, in some cases opting to co-invest. The port of Rotterdam has been assigned as a technical advisor by Phoenix Development Company to draft a masterplan for the development of the Port of Nickerie & Special Economic Zone in collaboration with N.V. Havenbeheer Suriname. The objective of the masterplan is to "quantify and outline the market potentials, the spatial planning requirements and the financial framework for establishing and growing a deep water port & industrial zone in Nickerie over a period of 30 years in order to facilitate industries and the development of the economy. The Development Masterplan will set the direction and the foundation for a more detailed Business Plan."

Port of Rotterdam is among the top 10 ports of the world and the largest port of Europe. It is the gateway port for many traded goods into Europe, reaching 500 million consumers within 24 hours. In the port of Rotterdam approximately 467 million tonnes of cargo have been handled in 2022. It represents one of the biggest petrochemical clusters in the world, receiving some 13% of the total energy consumption for Europe and reaching some 40% of EU Industrial end users for their energy needs. It is known for its high quality hinterland logistics, its deep water accessibility, its high safety standards, efficiency and its best-in-class port infrastructure. The Port of Rotterdam Authority's core tasks are the sustainable development, management and operation of the port, the maintenance of the smooth and safe handling of shipping and supporting the future-resilience of the port of Rotterdam.

The Port of Rotterdam is dedicated to comply with the goals of the Paris Climate Agreement, which is a legally binding international treaty on climate change, accelerating the worldwide energy transition. The energy transition can be seen as an opportunity for Suriname. It leads to sustainable development of the port-industrial area, economy and society in the region. This creates opportunities for existing and new companies both local and international. Suriname is one of the few countries in the world that contributes in a positive way to global warming, as Suriname has a negative balance of CO<sub>2</sub> emissions.





# MAD ENERGY

## *Clean energy projects*

MAD Energy is a clean energy infrastructure developer and technology incubator. Our mission is to build an ecosystem of clean energy projects and technologies tasked with transforming the global energy value chain.

Initiated by investments in clean, large scale transitional energy infrastructure and fulfilled by the research and development of next generation energy technologies, MAD Energy is reviving and surpassing the ideas and achievements of the legacy energy value chain.

Worldwide energy demand is expected to increase 50% by 2050 despite global economic uncertainty and volatility. In turn, we anticipate supply and demand imbalances will be exacerbated, yielding favorable conditions for next generation energy systems.

The developments of FirebirdLNG and the Port of Nickerie in Suriname offer great opportunities for the region. They will provide more affordable and clean energy, create jobs, and help reduce CO<sub>2</sub> emissions.

As a shareholder of FirebirdLNG, MAD Energy is helping to make a difference by creating clean, abundant, affordable energy. FirebirdLNG will be acquiring gas that would otherwise have been flared or left untapped by operators in the Guyana-Suriname Basin and converting the gas to liquid form for global sale and export.





## Redefining Clean energy

MAD Energy is providing clean energy that generates little to no emissions during its lifecycle - from production and storage, to distribution and transmission.

## Redefining Abundant energy

MAD Energy is aggressively pursuing technology that will produce and transmit abundant base load power to the world.

## Redefining Affordable energy

Current energy systems have failed to achieve widespread, stable affordability as exemplified by recent volatility in global energy inputs. MAD Energy is building solutions to address the affordability problem.



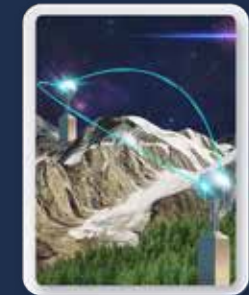
Energy  
production



Energy  
storage



Energy  
distribution



Energy  
transmission

# EAME

## *Working with the environment*

EAME is a multi-disciplinary environmental consultancy with expertise in tackling complex environmental problems, operating globally across various technical disciplines and industrial sectors, and fielding experts in environmental science, geography, ecology, geology, environmental chemistry, and engineering for both

onshore and offshore environments, emphasizing the importance of relationships for the success of the business and projects.

EAME has been engaged from the project's beginning and has independently spearheaded the development of ESG (Environmental,

Social, and Governance) programs for the Port of Nickerie, with Steve Rowan, the Managing Director, leveraging his nearly decade-long research and development experience in the region and over three decades of assisting renowned companies with environmental impact management.





EAME is very pleased and proud to have been selected as the lead ESIA consultant for this dynamic project. We take great pride in working with such an ESG focused client team. We have a common goal to achieve environmentally and socially responsible development, creating assets that bring about transformative socio-economic benefits whilst also protecting and even enhancing the environment hosting it.



# FIREBIRD LNG

## *Gas solutions for the basin*

FirebirdLNG is at the forefront of developing liquefied natural gas (LNG) export facilities in the Guyana – Suriname Basin.

Firebird's goal is to provide a home for natural gas, which in turn provides an economic, environmental, and social solution that resonates with natural gas producers, the nations in the basin, and our LNG buyers in Europe.

Our mission is to contribute to the transformation of the energy landscape by providing a cleaner, more reliable, and sustainable source of energy to the

markets. We strive to be a responsible corporate citizen by creating a positive impact on the environment, local society, and economy throughout the development and operation of our LNG facility.

As we develop our LNG operations, we aim to contribute to the development of the Port of Nickerie. Our operations will play a pivotal role in driving local economic development, boosting employment opportunities, and stimulating trade and investment in the surrounding region.

FirebirdLNG, together with MAD Energy, fosters responsible development and has initiated a mangrove preservation/ enhancement and shoreline integrity program with local and international university experts.

Together, we can unlock the vast potential of LNG from the Guyana – Suriname Basin, contribute to the global energy transition, and build a sustainable energy landscape for generations to come.

### ESG YOU CAN SEE

We develop to harness the potential of otherwise flared or untapped natural gas and transform it into a cleaner source of fuel. By converting this valuable resource into a more sustainable and responsible energy source, FirebirdLNG will make a positive impact on the environment, local economy, and communities. By working with us, our suppliers and clients will be able to share in our commitment to sustainable development and environmental protection.

## LNG SUPPLY AND DEMAND

Our partners, suppliers and relationships take us closer to our short and long-term goals.

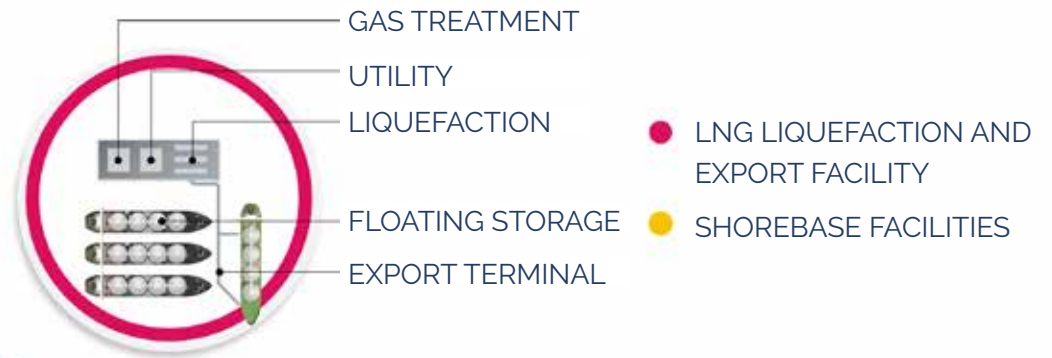
By leveraging expertise, advanced technology, and the strategic location, FirebirdLNG aims to become a reliable partner, fostering long-term relationships with natural gas suppliers in the basin and our LNG buyers in Europe.



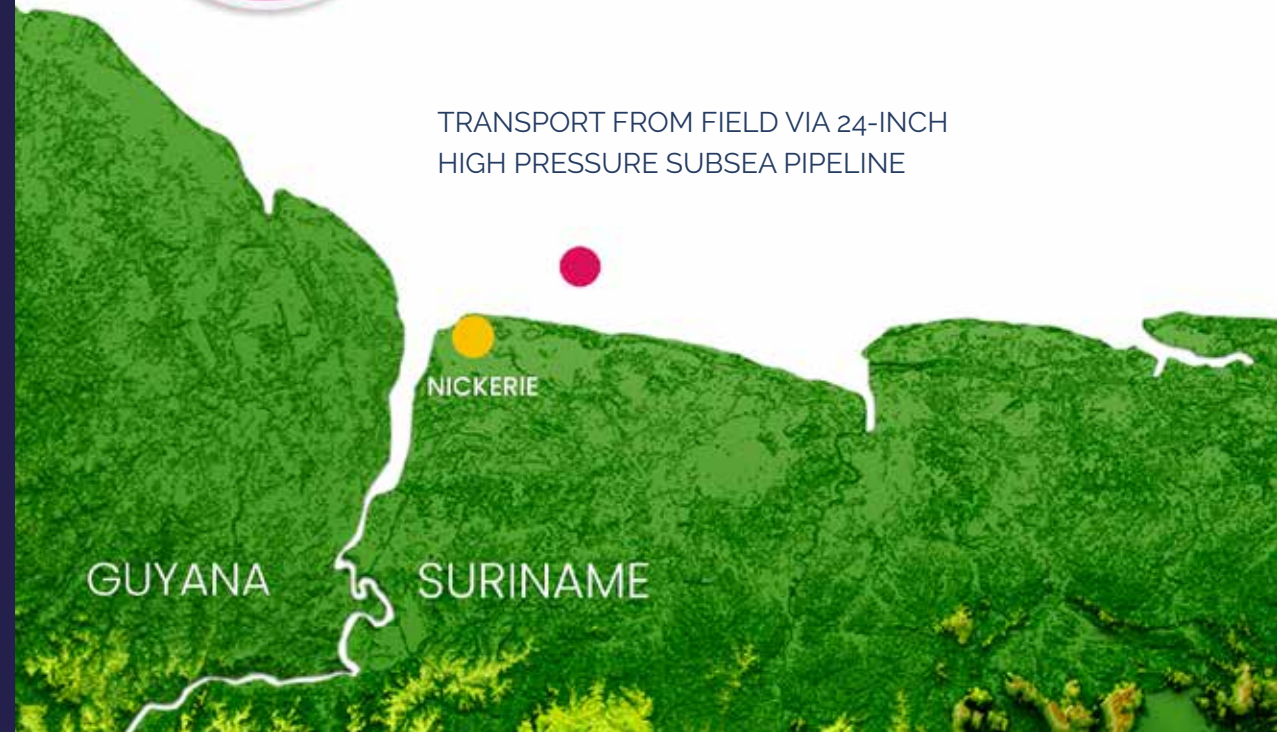
- FirebirdLNG is in discussions to buy natural gas from producers in the Guyana-Suriname Basin, offering 5 to 15-year sale & purchase agreements.
- FirebirdLNG has offtake commitments from major European Buyers.
- Phase 1 only requires a single producer supplying a volume of approx. 400 MMcfd of natural gas.
- Phase 1 has a capacity of approx. 2.7 MPTA of LNG.

## UTILIZING THE OPPORTUNITIES FOR GAS IN THE GUYANA-SURINAME BASIN

Liquefaction plant and export facilities at 17-meters water depths.



TRANSPORT FROM FIELD VIA 24-INCH HIGH PRESSURE SUBSEA PIPELINE



# VAN AALST GROUP & SAFEWAY

## *Sustainable logistic Solutions*

Van Aalst Group is recognized for its expertise in bulk handling solutions, providing cutting-edge systems and equipment that are specifically designed for environmentally efficient and safe handling of bulk materials.

Our solutions encompass a wide range of applications, including shore-based transfer, ship unloading, and offshore transshipment. Van Aalst's advanced cargo handling systems are designed to handle diverse materials such as cement, mud, barite, bentonite and drill cuttings. These systems ensure reliable and precise transfer, minimizing spillage and optimizing operational efficiency all in greenest possible methods.

One of our notable contributions to the industry is the renowned CargoMaxx system, a versatile and high-capacity system to handle, store and convey drill cuttings efficiently. This innovative solution enables environmentally friendly drilling operations highly efficient from offshore drilling locations directly to the shore-

based drill cutting recycling plant at the port facilities.

Our solutions prioritize safety by integrating advanced features such as dust suppression systems and automated controls, while also emphasizing environmental friendliness through measures to minimize dust emissions and reduce overall environmental impact.

With a proven track record, extensive experience, and commitment to excellence, we offer solutions that meet the evolving needs of the maritime and offshore industries. We have a deep understanding of the oil & gas industry and the challenges that come with efficiency and environmentally friendly solutions.

With our track record including with blue chip companies such as Siemens, Shell, Orsted, Exxon, DEME, Jan de Nul, Equinor, Total, Woodside, BP and Van Oord, we aim to contribute to the development of the Port of Nickerie with our sustainable, affordable and safe solutions.



## INNOVATION THAT CONTRIBUTES TO THE INDUSTRY NOW AND IN THE FUTURE

The Safeway Seagull, part of Van Aalst Group, addresses the industry's demand for high-end vessels in oil and gas operations, facing a shortage of dedicated W2W (Walk-to-Work) vessels. With a proven track record, we are the first supplier to hover at geostationary position when transferring passengers. Provided the vessel remains in its position, we offer reduced motion and sheltered comfort during transfers. The unique zero impact bumping system avoids loads on the landing platform and enables the gangway to connect to either side of the structure, with or without special gates. Equipping a basic vessel with Safeway enables comparable performance to high-end vessels at a fraction of the operating cost, providing unique, comfortable, safe, and cost-effective solutions for vital project support in windfarm and oil and gas operations. Sustainability is a central focus for Safeway, aligning with its vision of safe, sustainable, and affordable transfers at sea. Sustainability objectives are integrated in the core of the Company and aimed at creating value for Safeway's stakeholders to provide context for Safeway's targets and performance.



## SUSTAINABILITY

Sustainability is a key topic for Safeway; it contributes to the Company's vision to provide Safe, Sustainable and Affordable Transfers at Sea. Sustainability objectives are integrated in the core of the Company and aimed at creating value for Safeway's stakeholders to provide context for Safeway's targets and performance.



# BUILDING & WORKING WITH NATURE

## *Green shorebases of the future*

Our vision reimagines the collaborative synergy between ports, shore bases, and living facilities. Leveraging the innovative "walk to work" solutions from Safeway and CO<sub>2</sub>-neutralized transport solutions from Combi Lift, we redefine the synergy between offshore operations, transportation, housing and security.

By allocating a dedicated buffer zone, we can create an ideal environment for living, working, and leisure activities. This space opens opportunities for companies developing vacation parks and housing communities, such as EuroParcs, to design and operate green communities that cater to the diverse needs of residents, vacationers, and expats and their families.

The integration of sustainable practices and green initiatives within these developments ensures a harmonious coexistence with the environment. With a focus on reducing carbon footprint and maximizing ecological benefits, these green parks and shore bases become beacons of sustainable living and operation.

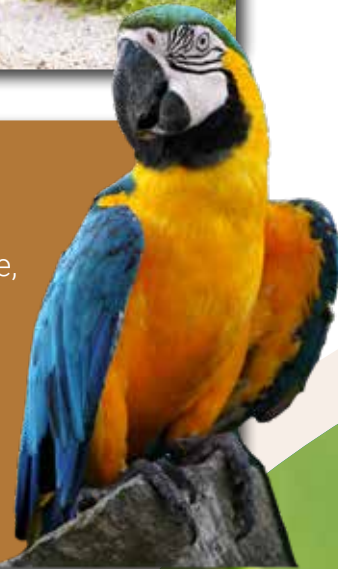
This holistic approach envisions a future where offshore operations, recreational activities, and residential communities seamlessly blend together. By embracing this concept, we create a vibrant and eco-friendly environment that fosters well-being, economic growth, and a strong sense of community. We aim to pave the way towards a sustainable and prosperous future for all stakeholders involved.







We believe that everyone deserves a comfortable home, particularly offshore workers who often relocate with their families to unfamiliar destinations.



## GREEN NEIGHBOURHOODS OF THE FUTURE

At the core of our vision for this port lies the belief that everyone deserves a comfortable home, particularly expat workers who often relocate with their families to unfamiliar destinations.

Unfortunately, living conditions in such areas are often subpar, lacking in recreational options.

Our aim is to revolutionize this paradigm by establishing top-notch communities catering to expat workers and locals alike. Our comprehensive concepts prioritize ample space for entertainment, restaurants, and sports facilities.



# COMBI LIFT AND HARREN GROUP

## *Sustainable integrated project logistic Solutions*

The Port of Nickerie is for us a very potent economic convergence zone, with many tactical and strategic advantages for the country of Suriname and the partners who contribute here in a value-added and thoughtful way.

As one of the few countries in the world with a negative CO2 footprint, this region of the world is one that is all the more important and worthy of protection, which means that we too do not want to leave it to coincidence that economic advancement is developed here with care and consideration in harmony with the exposed climate protection function for this planet.

We, the Combi Lift and Harren Group, have set ourselves the task of decarbonizing our business models and thus offering sustainable services for the future without having to compromise on performance and quality.

To this end, we are constantly bringing the best people on board and investing in ZERO emission technology and processes.

We offer our customers a fair CO2-neutralized service via corresponding certificate purchases, but much more importantly, we want to and will operate with assets and technology and as well

with our organizations in a CO2-optimized and generally emissions-neutralized manner in the future.

The development of the Harren Group's emission-optimized Orca class of vessels is the best example that we do not shy away from investments and entrepreneurial risks to achieve our vision of a more carbon neutral service provision and that we continue to develop ourselves in the right direction.

As friends of the country but also with people in our organization who have their own roots here, the country and its people are especially close to our hearts.

## THE GLOBAL GROUP SHAPING THE FUTURE OF MARITIME SERVICES AND PROJECT LOGISTICS.

Combi Lift is part of the Harren Group, a shipowner group made up of a diverse network of maritime and logistics services companies. Together, we are the bridge between land and sea. The home where great minds meet and the place where what's needed is connected to what's next.

For over 30 years, Harren Group has united the best thinkers and doers, to solve your toughest challenges and with Combi Lift as part of the group offering best solutions possible as your integrated project logistics and freight forwarding provider.

Carrying the solutions no one else can, keeping the world on the move, and leading the energy transition for a greener tomorrow.





Combi Lift combines superior transport solutions with integrative project and supply chain logistics. We're always on the move with combinations that excite.



Register at:



**HAVENBEHEER SURINAME**  
Port Management Company



Havenlaan Zuid 5  
Paramaribo – Suriname  
+597 404044  
smeport@havenbeheer.sr